

Energy efficient , beautiful environment



**Shenzhen K-Easy Automation Co.,Limited**  
Zhilingyu, Baishixia Community,Fuyong Street, Bao 'an District,  
,China Fuyong Street, Bao 'an District, Shenzhen  
Tel: +86-0755-27850411 Wechat/Whats App:+86-13332991978  
sales@keasyautomation.com  
http://www.keasyautomation.com/

Version: A01



KSS80 SERIES  
Soft Starter

## Company Introduction

Shenzhen K-Easy Automation Co.,Limited is a professional manufacturer, specialize in R&D And production of AC drives. We have built up a comprehensive product family. Frequency inverters' power covers the range from 0.4 to 630kW, and voltage range is between 220V and 480V. More than inverters are running smoothly 300, 000 units at different industrial sites

### WHY US

- ★ We believe “ **quality is life** ”,so we will test all products before shipment,All Module of our VFD will be used quality is life with Infention only,With years of persistence, the total failure ratio of Our frequency inverters has been controlled below 1%. We never lose a customer because of the quality problem.
- ★ With Strong R&D and Engineer Team, makes our after-service very easy, For all doubts and requesting for technologies supporting, We can offer detailed Solution without delay, so for us,“Not Only Products,But also solutions”
- ★ All our products will be offered with 24 months Warranty Period instead of 18 months

Join us, enjoy the business.



## Name Rules

**KSS80 - 4 T 0370 L**  
① ② ③ ④ ⑤

key	No	Content
Abbreviation	①	Product series
Voltage level	②	2: 220V 4: 380V
Input voltage	③	S: Single Phase T: Three Phase
Power adapter	④	Power adapter
Load type	⑤	L: Over load type M: Light load type

- Our VFD has been used in Shenzhen and Guangzhou Metrol Since Year 2014.
  - Problem Rate Less Than 1%..
  - Support OEM Service
  - Strong Engineer Team
  - 24 Months Warranty Time
  - Very Good After Sales-Service, Best Solutions
- Can be always offered within 2 hours



# KSS80 Series Soft Starter

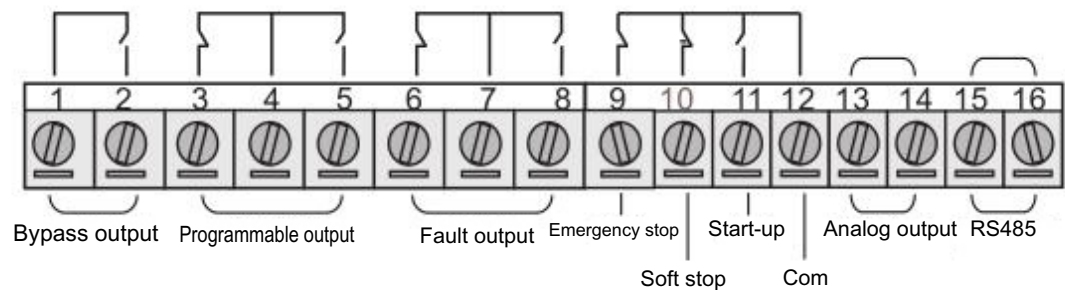
● Effect (Bypass built In & Without Bypass)

- Reduce the starting current of the motor, reduce the distribution capacity, and avoid investment in capacity expansion;
- Reduce starting stress and extend the service life of motors and related equipment;
- Smooth start and soft stop avoid the surge problem and water hammer effect of traditional starting equipment;
- A variety of starting modes and a wide range of current and voltage settings, can adapt to a variety of load occasions, improve the process;
- Improve the reliable protection function, more effectively protect the safety of the motor and related equipment;
- Can be used for frequent start and stop The occasion.



Complete protection function	Multiple start and stop modes	Various control support
Overheat protection	Current limit start	Programmable relay output
Input phase protection	Voltage ramp start	Programmable fault relay output
Output phase protection	Jump mode start	4~20mA dc analog output
3 phase unbalance protection	Current ramp start	Rs485 communication input/output
Start over current protection	Voltage limited current double closed loop start	
Run overload protection	Soft stop	
Low voltage protection	Free stop	
Over voltage protection		
Load short circuit protection		

## Terminal Show

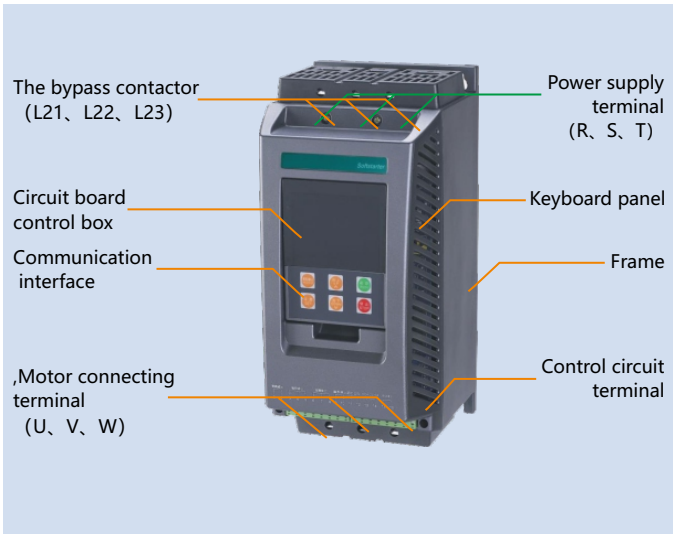


220V/380V/660V-50/60HZ	Rated motor power			Model appearance
Max working current	220V	380V	660V	Please refer to the following page
38A	9KW	18.5KW	30KW	R1
44A	11KW	22KW	37KW	
60A	15KW	30KW	45KW	
74A	18.5KW	37KW	55KW	
100A	22KW	45KW	75KW	
110A	30KW	55KW	95KW	
150A	37KW	75KW	115KW	R2
160A	45KW	95KW	132KW	
200A	55KW	115KW	160KW	
250A	75KW	132KW	200KW	
300A	95KW	160KW	250KW	
360A	115KW	200KW	355KW	R3
480A	132KW	250KW	400KW	
590A	160KW	315KW	500KW	
660A	---	355KW	630KW	
790A	200KW	400KW	710KW	
1000A	250KW	500KW	900KW	
1200A	355KW	630KW	---	

\*The rated power in the table is standard load power,when the load is heavy or the application is special,should select a higher rated power rating.

## Technical Specification

Item	Desc
Certification/QCS	CE, TUV/ISO9001
(VAC) Three-phase power supply voltage	380V±15%
Frequency	50Hz
Apply to the motor	Rattrap type three-phase asynchronous motor
Starting frequency	Depending on the load, it is recommended that no more than 20 times per hour.
Protection level	IP40 (Negotiable)
Power of resisting voltaic impingement	15g/11ms
Shock resistance	Below 3000m above the ground, vibration power plant under 0.5G
Environment temperature/working temperature	-10°C to +40°C w/o derating ( between 40°C-60°C, rasing each 1°C will cause 1.2% current derating)
Storage temperature	-25°C~70°C
Environment humidity	90% RH in Max. ( no dewing)
Maximum working height	Below 1000 meters non-condensing ( more than 1000 meters, each additional 100 meters, the current reduced by 0.5%)
Type of cooling	Natural air cooling
Vertical installation location relative to the maximum working angles	No requirement

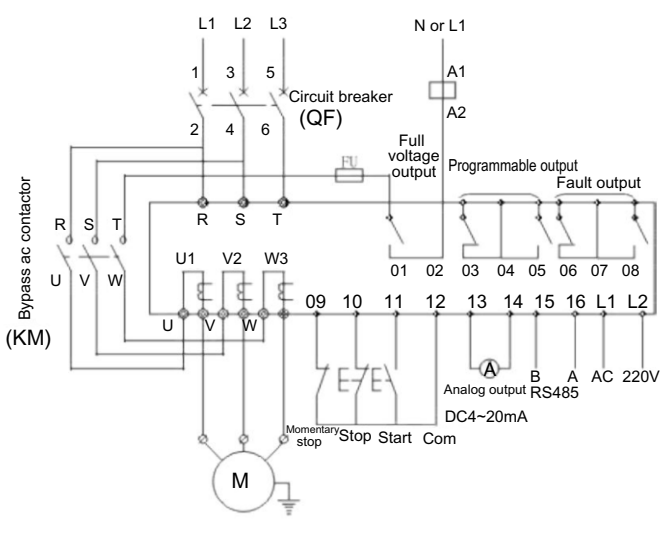


Optional accessories table

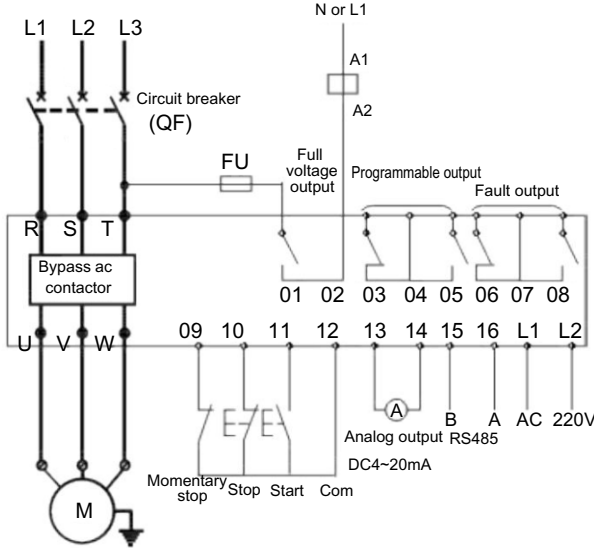
Attachment name	Selection Number	Option Description
Panel outside extension cable	A3	The digital part is mean the cable length
English LCD Panel	E	
Modbus communication card	M	Some models offer dafault presets
Profibus communication card	P	
CAN Open communication card	C	

Application					
Compressor	Crusher	Axial flow fan	Conveying machinery	Water pump	Cargo pump
Turbo blower	Fan	Blender	Screw compressor	Fire pump	Pulp machine

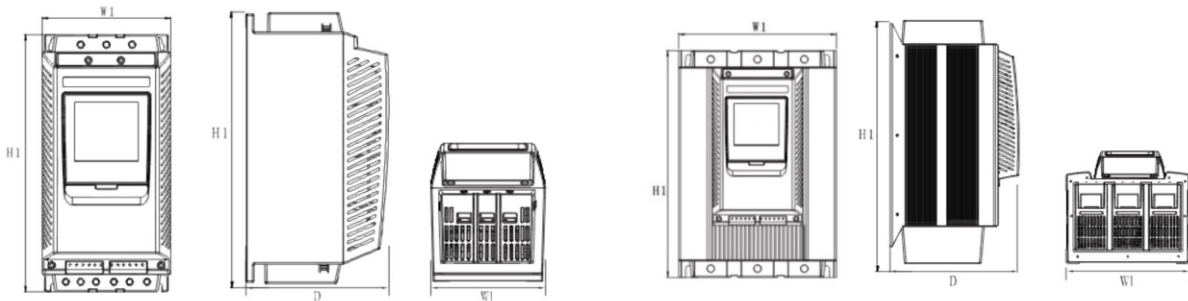
## Advanced Design



Without Bypass Circuit diagram



Bypass Built In Circuit diagram



Model	Product Dimensions(mm)			Installation dimensions(mm)			Package size (cm)	G.W. (kg)
	H1	W1	D	H2	W2	Ø		
R1	310	155	175	296	127	M6	38*23.5*27.5	5
R2	400	270	240	355	244	M8	65*39*38	20.5
R3	455	300	265	395	265	M8	57.5*43*39	31
R4	525	265	240	490	235	M8	65*40*38	27